

How to Apply for an Internship with Family Shelter Service

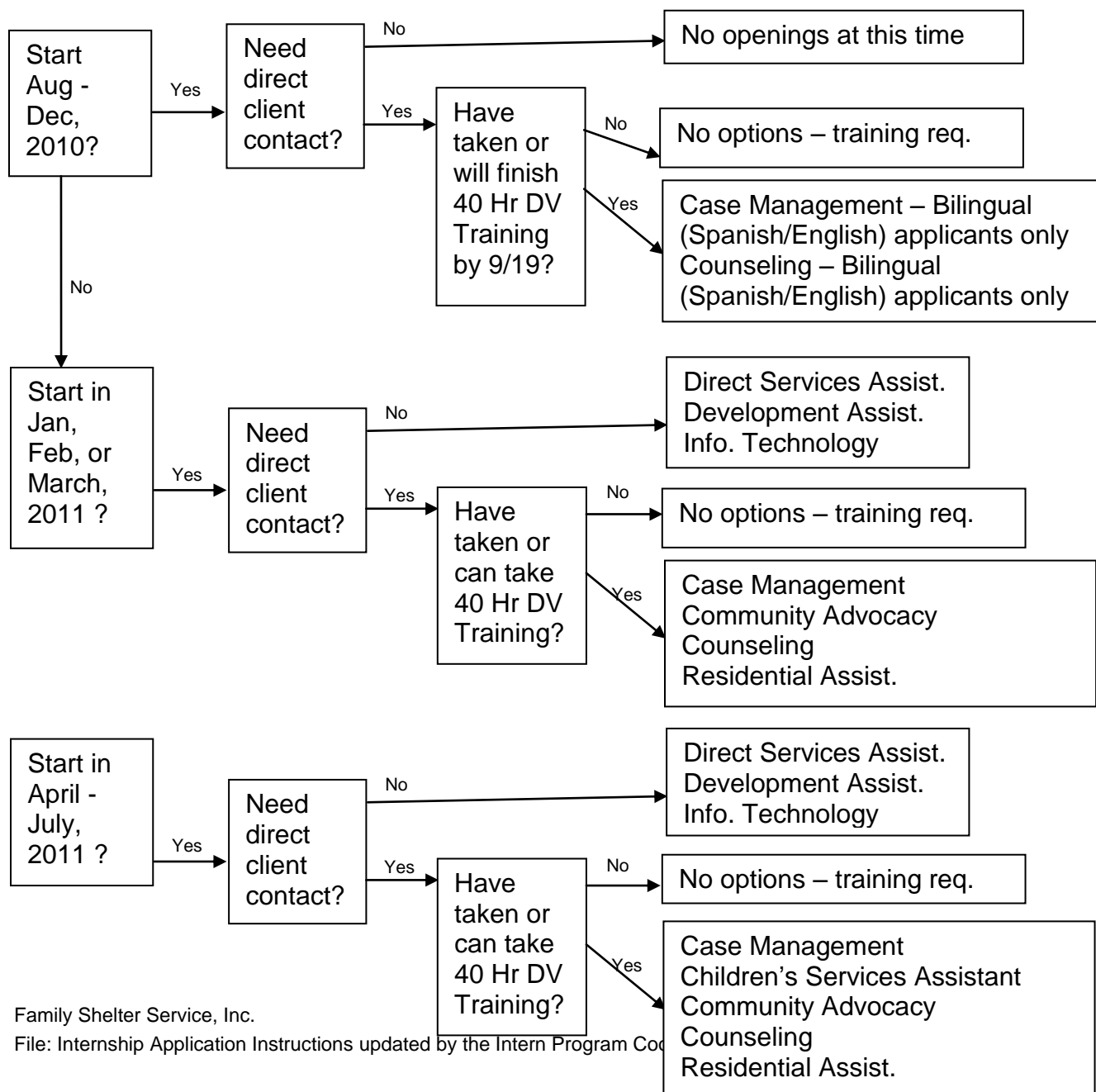
(Revised 08/11/2010)

To apply for an Internship, these instructions will help you make sure your application is processed in a timely manner.

For questions, contact the Intern Program Coordinator either via email at alysset@familyshelterservice.net or ph. 630-221-8293 x7141.

1. Determine if there are openings that fit your internship requirements.

These are the current openings available:



- Degree Level indicates these are positions for students in the process of earning this degree level, not needing to have already obtained this degree level.
- If you are having difficulty deciding which positions fit your internship requirements, please contact your school's Field Experience/Internship Coordinator.

Position: Case Management Specialist

For those pursuing Degree Levels / Types	Bachelors or Masters in SW, Psychology or Human Services related degrees
Next Available Openings	Start Aug - Dec, 2010? Only applicants that have taken or will finish 40 Hr DV Training by 9/19 & & are Bilingual (Spanish/English) Start Jan – March, 2011 – any applicants (Bilingual preferred but not required)
Activities Include Direct Client Contact?	Yes
48-Hour DV Training Required?	Yes, before client contact
Work Schedule	Monday afternoons (2-4pm), Monday evenings (6pm-9pm), & usually 1-2 evenings a week (Tue-Fri to start), though some possibility of daytime & weekend hours (after a few months)
Private Transportation Required?	Yes
Min. # Hours Commitment Required	min. 300 hours over min. 4 months (4 months from client-contact date to end date)

Position: Children's Services Assistant

For those pursuing Degree Levels / Types	Bachelors in SW, Psychology, or Human Services related degrees
Next Available Openings	During or after April 2011
Activities Include Direct Client Contact?	Yes
48-Hour DV Training Required?	Yes, before client contact
Work Schedule	Monday afternoons (2-4pm), Monday evenings (6pm-9pm), & usually 1-2 evenings a week (Tue-Fri to start), though some possibility of daytime & weekend hours (after a few months)
Private Transportation Required?	Yes
Min. # Hours Commitment Required	min. 300 hours over min. 4 months (4 months from client-contact date to end date)

Position: Community Advocacy

For those pursuing Degree Levels / Types	Bachelors or Masters in SW, Forensic, Criminal Justice, or Human Services related degrees
Next Available Openings	During or after January, 2011
Activities Include Direct Client Contact?	Yes
48-Hour DV Training Required?	Yes, before client contact
Work Schedule	Any 2-3 days, Mon-Fri, 8am-4pm including Monday 2-4pm & Wednesday afternoons.
Private Transportation Required?	Yes
Min. # Hours Commitment Required	min. 600 hours required over min. 6 months (6 months from client-contact date to end date)

Position: Counseling

For those pursuing Degree Levels / Types	Must be enrolled in or a graduate of a Masters in Counseling, SW, Psychology or Human Services related degrees
Next Available Openings	Start Aug - Dec, 2010? Only applicants that have taken or will finish 40 Hr DV Training by 9/19 & are Bilingual (Spanish/English) Start Jan – March, 2011 – any applicants (Bilingual preferred but not required)
Activities Include Direct Client Contact?	Yes
48-Hour DV Training Required?	Yes, before client contact
Work Schedule	Monday afternoons (2-4pm) & at least 2-3 evenings a week (Mon-Fri to start), though some possibility of daytime & weekend hours (after a few months)
Private Transportation Required?	Yes
Min. # Hours Commitment Required	min. 500 hours over min. 8 months (8 months from client-contact date to end date)

Position: Residential Assistant

For those pursuing Degree Levels / Types	Bachelors in Counseling, SW, Psychology or Human Services related degrees
Next Available Openings	During or after Jan, 2011
Activities Include Direct Client Contact?	Yes
48-Hour DV Training Required?	Yes, before client contact
Work Schedule	Monday afternoons (2-4pm) & 3 blocks of 3-4 hrs each; Mon-Fri to start, possibility of weekend hours after a few months
Private Transportation Required?	Yes

Min. # Hours Commitment Required	min. 300 hours over min. 4 months (4 months from client-contact date to end date)
----------------------------------	---

Position: Direct Services Assistant

For those pursuing Degree Levels / Types	Bachelors or Masters in SW, Psychology, or Human Services Admin related degrees
Next Available Openings	During or after Jan, 2011
Activities Include Direct Client Contact?	No
48-Hour DV Training Required?	Not to start, must be completed sometime during internship
Work Schedule	Monday afternoons (2-4pm) & Prefer at least 8 hours during Mon-Fri, 9am-5pm; rest is flexible
Private Transportation Required?	No
Min. # Hours Commitment Required	min. 200 hours over min. 2 months

Position: Development Assistant

For those pursuing Degree Levels / Types	High School, Bachelors, or Masters in any field upon school's approval
Next Available Openings	During or after Jan, 2011
Activities Include Direct Client Contact?	No
48-Hour DV Training Required?	No
Work Schedule	Prefer at least 4 hours during Mon-Fri, 9am-5pm; rest is flexible
Private Transportation Required?	No
Min. # Hours Commitment Required	min. 200 hours over min. 2 months

Position: Information Technology**

For those pursuing Degree Levels / Types	Bachelors or Masters in technology related degree
Next Available Openings	Anytime
Activities Include Direct Client Contact?	No
48-Hour DV Training Required?	No
Work Schedule	Prefer at least 4 hours during Mon-Fri, 9am-5pm; rest is flexible
Private Transportation Required?	Yes
Min. # Hours Commitment Required	min. 200 hours required

2. Decide which 48-Hour Domestic Violence Training fits your schedule (if applicable).

All volunteers/interns seeking direct service contact with domestic violence victims are required by Illinois law to take a 40-Hour Domestic Violence Training at an Illinois Certified Domestic Violence Professional approved site or at COD (College of DuPage).

(For a list of approved sites, see www.ilcdvp.org/approved_trainingsupervision_sites.htm.)

Family Shelter Service offers a 48-Hour Domestic Violence Training which is open to everyone in the community.

Late Fall Offering will be: October 2 to November 20 for 8 consecutive Saturdays from 9am to 4pm. (11/21 is earliest date client contact can begin).

Winter 2011 Offering not yet scheduled: usually mid-January to late-February.

For more information on when the next offerings are & how to register, see www.familyshelterservice.org/training.html or contact our training Coordinator, Peggy Radke, at pradke@familyshelterservice.net or (630) 221-8293 x7123.

There is a fee for materials which is \$50 for students. It's up to you whether or not you want to take the training before accepting an internship. If you do, you will be charged a student fee, but we will not cash your check until you receive our decision on Internship placement. If made an Intern, we will return the check.

An intern can begin client contact when he/she has:

1. Completed the 48 Hr DV Training;
- and
2. a copy of his/her Professional Liability Insurance on file with Family Shelter (only for Counseling Internships);
- and
3. verified his/her school's Internship guidelines (Some schools require classes to have begun & some do not.)

If you have already completed the 40-Hour Domestic Violence Training at an Illinois Certified Domestic Violence Professional approved site or at COD (College of DuPage), then on the application when asked "If seeking an Internship with direct contact with clients, which session of the 48-Hour Domestic Violence Training would you be wanting to attend?" put "Already completed at _____ place _____ between mm/yy and mm/yy". Submit a copy of your 40-Hour Domestic Violence Training Certificate with your application (in step 4).

3. Submit your materials

Complete the Intern Application. This form is a Word document. To type into it, click in the cell & type. If the application asks for information already on your Resume (or Curriculum Vitae), feel free to copy/paste into the application.

Email the completed Intern Application & your Resume (or Curriculum Vitae) to alyset@familyshelterservice.net

These may also be submitted by mail:
Family Shelter Service
Attn: Intern Program Coordinator
605 E. Roosevelt Rd.
Wheaton, IL 60187

Or by fax:
Fax # 630-221-8098
Attn: Intern Program Coordinator

Application Process & Time-Frames

Applications are accepted all year long, though we encourage you to apply as soon as possible because we often fill all of our vacancies quickly, sometimes as much as 8 months in advance.

The application process typically takes 3 to 5 weeks. Applications that are missing any information will take longer.

For students from schools that are following the ACEPT Notification Day time schedule, FSS will follow the ACEPT time schedule.

1. Once an application packet is submitted, the Intern Program Coordinator confirms to the applicant that it was received.
2. The Intern Program Coordinator then reviews the application packet & will respond with any questions.
3. Once all questions have been answered, the Intern Program Coordinator will decide if an interview will be granted.
4. If an interview will be granted the Intern Program Coordinator will usually email to schedule an interview.
5. Once an interview is conducted, the applicant is notified via email if an offer will be made, usually within 1-2 weeks.
6. If an offer is made, an applicant is usually given a minimum of 1 week to accept the offer.
7. If an offer is accepted, then an Acceptance Packet is mailed which includes information on the next steps toward coming on as an intern.
8. If at any point an application is declined, the Intern Program Coordinator will notify the applicant as soon as possible. Likewise, if at any point an applicant wishes to withdraw their application from consideration, we ask that you notify the Intern Program Coordinator as soon as possible.

Checking the status of your application

To check the status of your application, you may email alyset@familyshelterservice.net or call the Intern Program Coordinator directly at 630-221-8293 x7141.